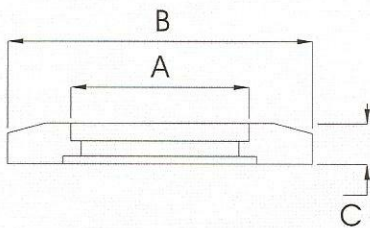


PRODUCT

KF FLANGE(IN)

(UNIT:mm)

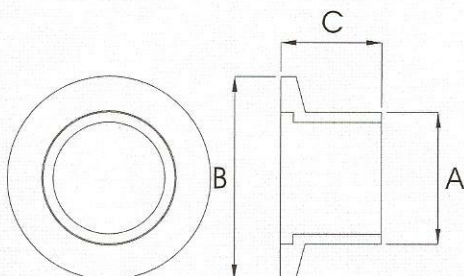


KF FLANGE(INSIDE)

규격	A(Ø)	B(Ø)	C(T)
NW25	25.4	40	5
NW40	38.1	55	5
NW50	50.8	75	5
NW63	63.5	95	12
	76.3	95	12
NW80	76.3	114	12
	89.1	114	12
NW100	101.6	134	12
	114.3	134	12
NW125	127	160	12
	139.8	160	12
NW160	152.4	190	12
	165.2	190	12
NW200	216.3	240	12

KF FLANGE(OUT)

(UNIT:mm)



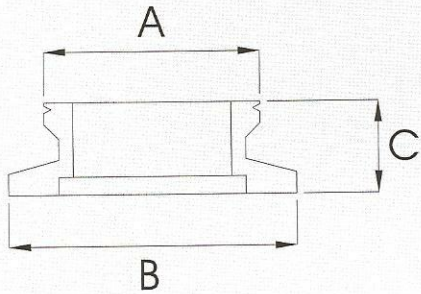
KF FLANGE (OUTSIDE)

규격	A(Ø)	B(Ø)	C(T)
NW10	12.7	30	20
NW16	19.05	30	20
	21.7	30	20
	25.4	30	20
NW25	25.4	40	20
	27.2	40	20
	34	40	20
NW40	38.1	55	20
	42.7	55	20
	48.6	55	20
NW50	50.8	75	20
	60.5	75	20
NW63	63.5	95	20
	76.3	95	20
NW80	76.3	114	20
	89.1	114	20
NW100	101.6	134	20
	114.3	134	20

PRODUCT

KF BELLOWS FLANGE

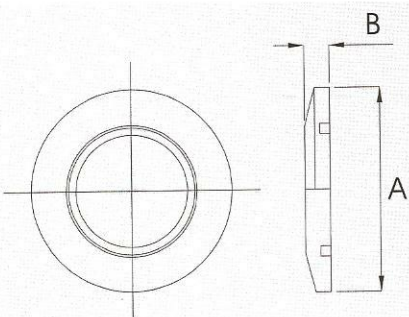
(UNIT:mm)



KF BELLOWS FLANGE			
규격	A(Ø)	B(Ø)	C(T)
NW16	25.5	30	15
NW25	31.5	40	13
NW40	45	55	13
NW50	58.5	75	15
NW63	78	95	20
NW80	89	114	20
NW100	114.5	134	20
NW125	141	160	20
NW160	164	190	20

KF END FLANGE

(UNIT:mm)

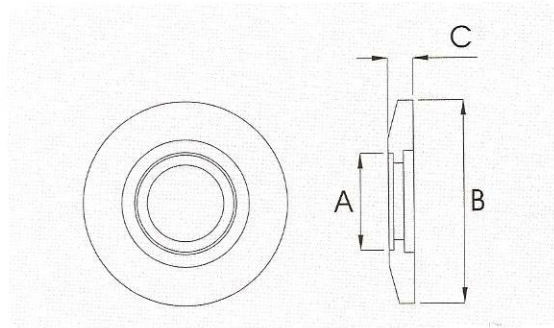


KF END FLANGE		
규격	A(Ø)	B(T)
NW10	30	5
NW16	30	5
NW25	40	5
NW40	55	5
NW50	75	5
NW63	95	12
NW80	114	12
NW100	134	12
NW125	160	12
NW160	190	12

PRODUCT

KF END / HOLE 가공

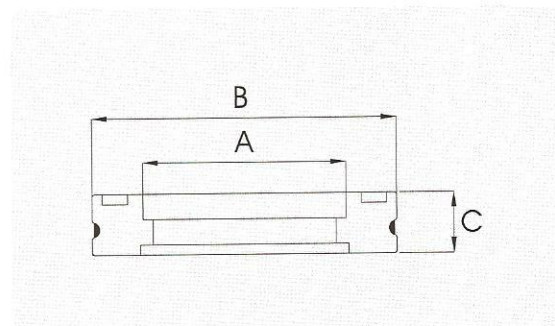
(UNIT:mm)



KF END / HOLE 가공			
규격	A(Ø)	B(Ø)	C(T)
NW10	1 / 2 (관통)	30	5
	1 / 4 (관통)	30	5
NW16	1 / 4 (관통)	30	5
	3 / 8 (관통)	30	5
	1 / 2 (관통)	30	5
	3 / 4 (관통)	30	5
NW25		21.7	5
	1 / 4 (관통)	40	5
	3 / 8 (관통)	40	5
	1 / 2 (관통)	40	5
	3 / 4 (관통)	40	5
NW40		25.4	5
	1 / 4 (관통)	55	5
	3 / 8 (관통)	55	5
	1 / 2 (관통)	55	5
	3 / 4 (관통)	55	5
		25.4	5
		34	5
		38.1	5
NW50		42.7	5
	3 / 8 (관통)	75	5
		25.4	5
		38.1	5
		48.6	5
		50.8	5
	60.5	5	

MF FLANGE

(UNIT:mm)

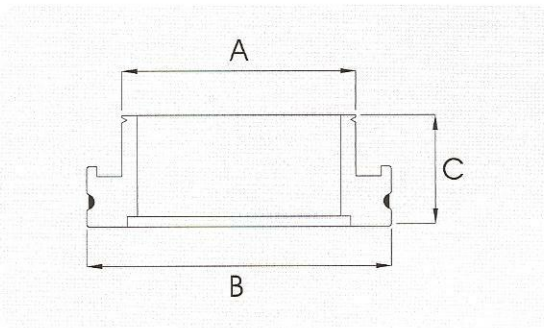


MF FLANGE			
규격	A(Ø)	B(Ø)	C(T)
NW63	63.5	95	12
	76.3	95	12
NW80	76.3	110	12
	89.1	110	12
NW100	101.6	130	12
	114.3	130	12
NW125	127.4	155	12
	139.8	155	12
NW160	152.3	180	12
	165.2	180	12
NW200	216.3	240	12
NW250	267.4	290	12
NW320	318.5	370	17

PRODUCT

MF BELLOWS FLANGE

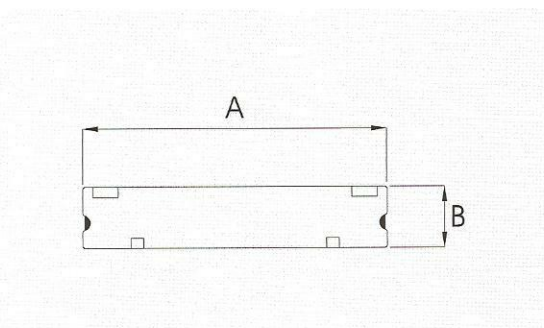
(UNIT:mm)



MF BELLOWS FLANGE			
규격	A(Ø)	B(Ø)	C(T)
NW63	78	95	23
NW80	89	110	23
NW100	114.5	130	23
NW125	141	155	23
NW160	164	180	23
NW200	220	240	23
NW250	271	290	23

MF END FLANGE

(UNIT:mm)

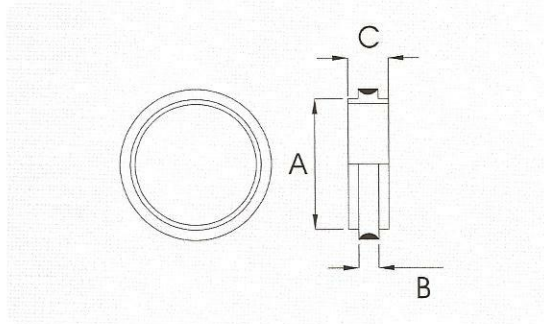


MF END FLANGE		
규격	A(Ø)	B(T)
NW63	95	12
NW80	110	12
NW100	130	12
NW125	155	12
NW160	180	12
NW200	240	12
NW250	290	12

PRODUCT

CENTER-RING

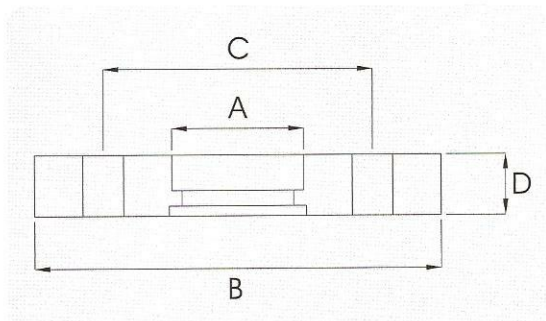
(UNIT:mm)



CENTER-RING			
규격	A(Ø)	B(Ø)	C(T)
NW10-NW16	11.8x16.8	3.9	8
NW10	11.8	3.9	8
NW16	16.8	3.9	8
NW25	25.8	3.9	8
NW40	40.8	3.9	8
NW50	51.8	3.9	8
NW63	69.8	3.9	8
NW80	82.8	3.9	8
NW100	101.8	3.9	8
NW125	126.8	3.9	8
NW160	152.5	3.9	8
NW200	212.5	3.9	8
NW250	260.5	3.9	8
NW320	316.5	5.6	14

VF BOLTED FLANGE

(UNIT:mm)

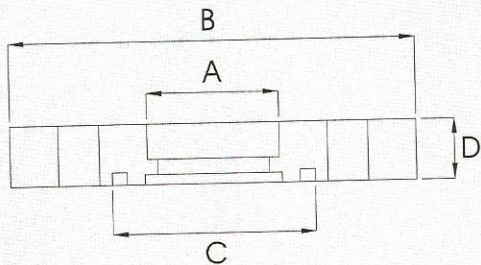


VF BOLTED FLANGE				
규격	A(Ø)	B(Ø)	C(Ø)	D(T)
VF25	34	80	60(4-Ø10)	8
VF40	48.6	105	85(4-Ø10)	10
VF50	60.5	120	100(4-Ø10)	10
VF65	76.3	145	120(4-Ø12)	10
VF80	89.1	160	135(4-Ø12)	12
VF100	114.3	185	160(8-Ø12)	12
VF150	165.2	235	210(8-Ø12)	12
VF200	216.3	300	270(8-Ø15)	16
VF250	267.4	350	320(8-Ø15)	16
VF300	318.5	400	370(12-Ø15)	16

PRODUCT

VG BOLTED FLANGE

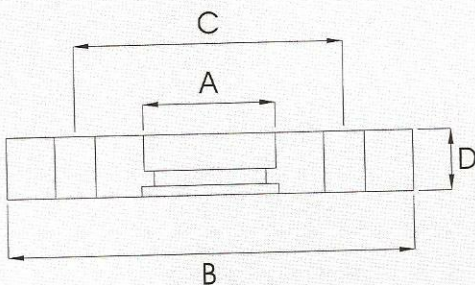
(UNIT:mm)



VG BOLTED FLANGE				
규격	A(Ø)	B(Ø)	C(Ø)	D(T)
VG25	34	80	49	8
VG40	48.6	105	64	10
VG50	60.5	120	79	10
VG65	76.3	145	94	10
VG80	89.1	160	109	12
VG100	114.3	185	129	12
VG150	165.2	235	184	12
VG200	216.3	300	239	16
VG250	267.4	350	289	16
VG300	318.5	400	339	16

ISO BOLTED FLANGE

(UNIT:mm)

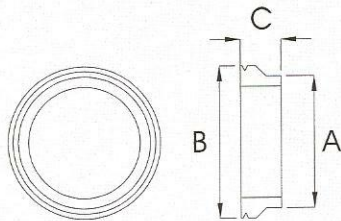


ISO BOLTED FLANGE				
규격	A(Ø)	B(Ø)	C(Ø)	D(T)
NW63	63.5	130	110(4-Ø9)	12
	76.3	130	110(4-Ø9)	12
NW80	76.3	145	125(8-Ø9)	12
	89.1	145	125(8-Ø9)	12
NW100	101.6	165	145(8-Ø9)	12
	114.3	165	145(8-Ø9)	12
NW150	152.3	225	200(8-Ø11)	16
	165.2	225	200(8-Ø11)	16
NW200	216.3	285	260(12-Ø11)	16

PRODUCT

BELLOWS ADAPTOR

(UNIT:mm)



BELLOWS ADAPTOR

규격	A(Ø)	B(Ø)	C(T)
NW16	19.05	25.6	12
NW25	25.4	31.5	12
	27.2	31.5	12
NW40	38.1	45	13
NW50	50.8	58.5	12
NW63	63.5	78	12
	76.3	78	13
NW80	76.3	89.1	13
	89.1	89.1	13
NW100	101.6	114.5	15
	114.3	114.5	15
NW160	165.2	164	15

HOSE ADAPTOR

(UNIT:mm)



HOSE ADAPTOR

HOSE 3/8	—	TU 1/4
HOSE 3/8	—	TU 3/8
HOSE 3/8	—	TU 1/2
HOSE 1/2	—	TU 3/8
HOSE 1/2	—	TU 1/2
HOSE 1/2	—	TU 3/4
HOSE 3/4	—	TU 1/2
HOSE 3/4	—	TU 3/4
HOSE 3/4	—	TU 1"
HOSE 1"	—	TU 1"

PRODUCT

CF FLANGE

(UNIT:mm)



C.F FLANGE

NW16(1.33")

NW25(2.11")

NW40(2.75")

NW50(3.37")

NW63(4.47")

NW80(4.62")

NW100(5.97")

NW160(7.97")

NW200(9.97")

REDUCER

(UNIT:mm)



REDUCER

종류	규격
NW16-25	Ø30 X Ø40 X 40L
NW16-40	Ø30 X Ø55 X 40L
NW16-50	Ø30 X Ø75 X 40L
NW50-25	Ø75 X Ø40 X 40L
NW50-40	Ø75 X Ø55 X 50L