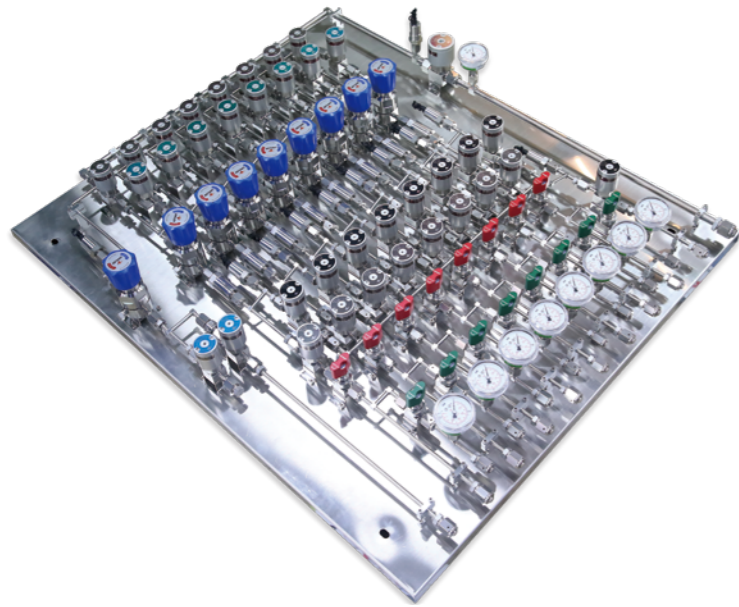


IGS

Valves

IGS Shut Off Valve	308
IGS Pneumatic	309
IGS Block Valve	310
IGS Check Valve	311

IGS Regulator	312
IGS Metering Valve	314
GASKET & GASKET RETAINER	315
IGS HEX. Socket Cap Screw	315



Space reduction

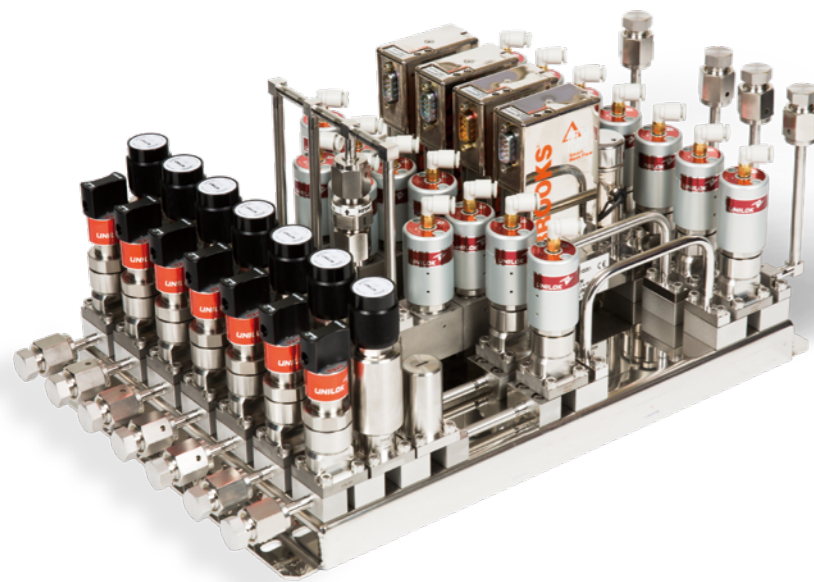
60% space reduction than previous product

Increased Task ability

- All parts can be assembled and disassembled from the top.
- Simplification Heating Method

Increased reliability

- Using W Seal / C Seal
- Test All Assembly Point



Increased corrosion resistance

- Processed using high-corrosion resistant materials
- Reduced weld point by 80%
- Post-processing to improve corrosion resistance

Optimized flow path

- Optimize the all parts flow path shape
- Improvement through a separate purge line

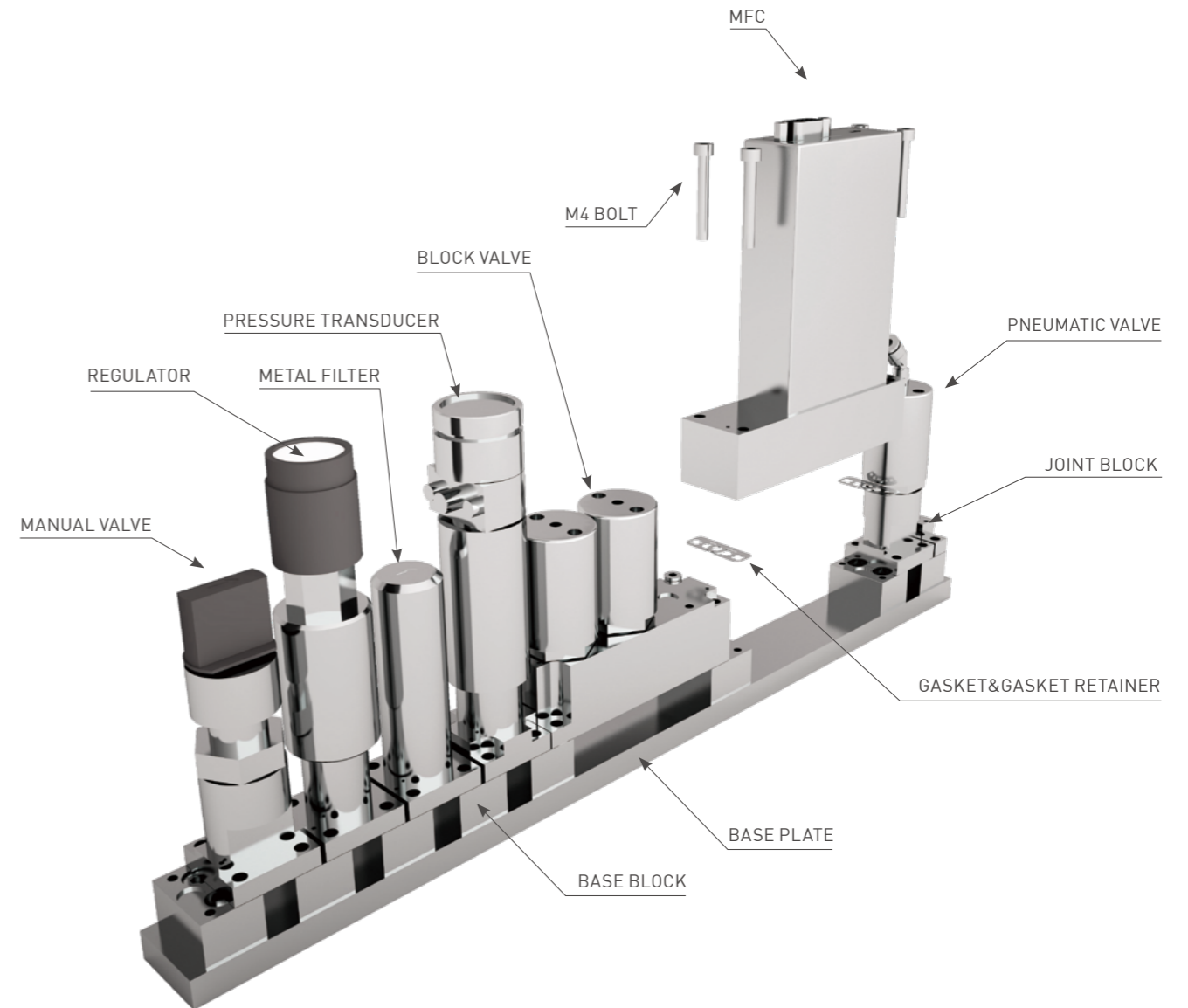
Standardization of parts

- Standardization of basic parts
- Standardization of Quality through lot management

IGS Shut Off Valve

SEAL TYPE	SIZE	SPEC.
W-Seal	1.125"	SEMI Compliant Design F82~F95
	1.5"	
C-Seal	1.125"	
	1.5"	

IGS PANEL PART



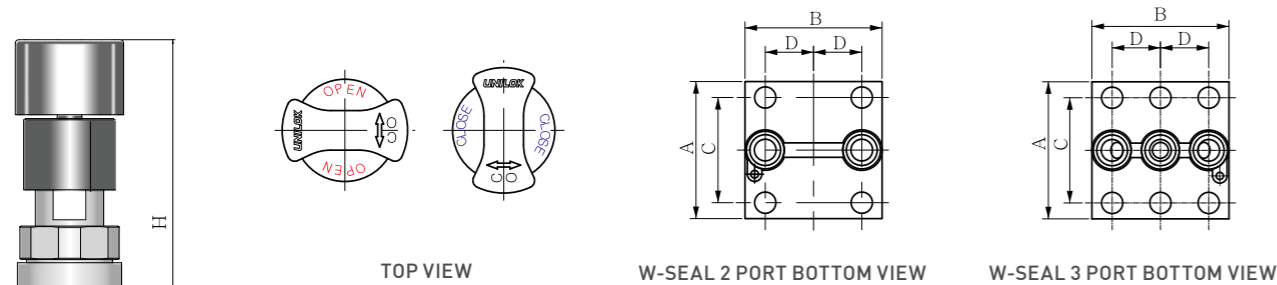
IGS MANUAL VALVE

Specifications

C Value	0.27
Max. Working Pressure	10 bar(145psig)
Max. Working Temperature	-10~80°C(14~176°F)
Internal Leakage Allowance -He	$\leq 1 \times 10^{-9}$ atm.cc/s
External Leakage Allowance -He	$\leq 1 \times 10^{-9}$ atm.cc/s
Materials	Body - 316L VAR SS
	Seat - PCTFE
	Diaphragm - ELGILOY

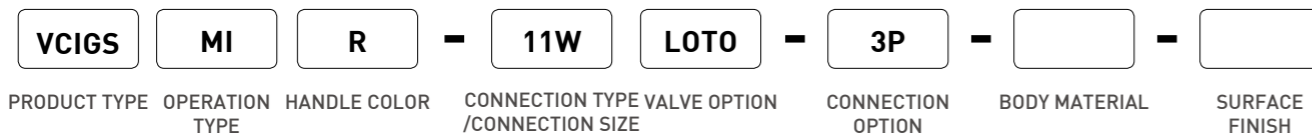


Dimensions



SIZE	CONNECTION TYPE	A	B	C	D	H(LOTO)
1.125"	W-SEAL	28.6	28.6	21.8	10	88.3(93)
	C-SEAL	28.6	28.6	21.8	10.9	88.3(93)
1.5"	W-SEAL	39	39	30	13	88.3(93)
	C-SEAL	39	39	30	15.5	88.3(93)

How To Order



PRODUCT TYPE		HANDLE COLOR		CONNECTION TYPE		CONNECTION OPTION	
VCIGS	IGS VALVE	R	RED	**W	W-SEAL	None	2 PORT
OPERATION TYPE		G	GREEN	**C	C-SEAL	3P	3 PORT
		W	WHITE	VALVE OPTION		BODY MATERIAL	
MI	MANUAL (SPRING)	B	BLACK	None	NONE	None	316L VAR SS
MS	MANUAL(SCREW)	CONNECTION SIZE		LOTO	LOCK OUT-TAG OUT	INTERNAL SURFACE FINISH	
		11*	1.125"			None	ELECTRO POLISHING
		15*	1.5"				

Dimensions are for reference only and are subject to change without prior notice.

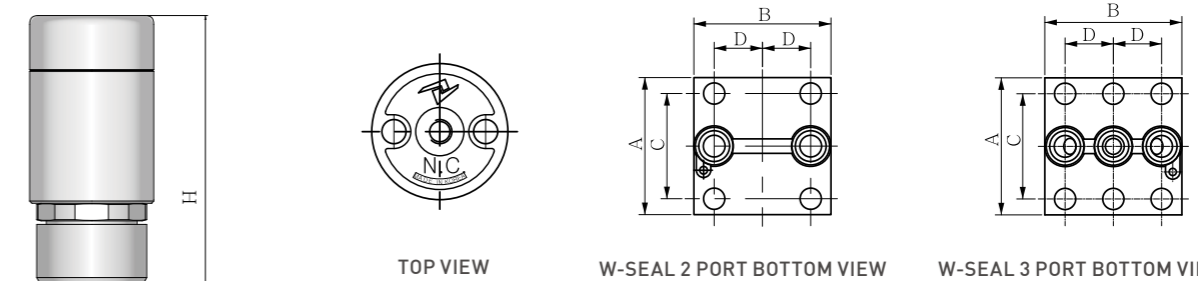
IGS Pneumatic Valve

Specifications

C Value	0.27
Max. Working Pressure	10 bar(145psig)
Max. Working Temperature	-10~80°C(14~176°F)
Internal Leakage Allowance -He	$\leq 1 \times 10^{-9}$ atm.cc/s
External Leakage Allowance -He	$\leq 1 \times 10^{-9}$ atm.cc/s
Materials	Body - 316L VAR SS
	Seat - PCTFE
	Diaphragm - ELGILOY



Dimensions



SIZE	CONNECTION TYPE	A	B	C	D	H(P.O)
1.125"	W-SEAL	28.6	28.6	21.8	10	82.3(79.7)
	C-SEAL	28.6	28.6	21.8	10.9	82.3(79.7)
1.5"	W-SEAL	39	39	30	13	82.3(79.7)
	C-SEAL	39	39	30	15.5	82.3(79.7)

How To Order



PRODUCT TYPE		CONNECTION SIZE		VALVE OPTION		BODY MATERIAL	
VCIGS	IGS VALVE	11*	1.125"	None	NONE	None	316L VAR SS
		15*	1.5"	RS	PROXIMITY SENSOR	INTERNAL SURFACE FINISH	
						None	ELECTRO POLISHING
VALVE TYPE		CONNECTION TYPE		CONNECTION OPTION			
PC	PNEUMATIC N.C	**W	W-SEAL	None	2 PORT		
PO	PNEUMATIC N.O	**C	C-SEAL	3P	3 PORT		

Dimensions are for reference only and are subject to change without prior notice.

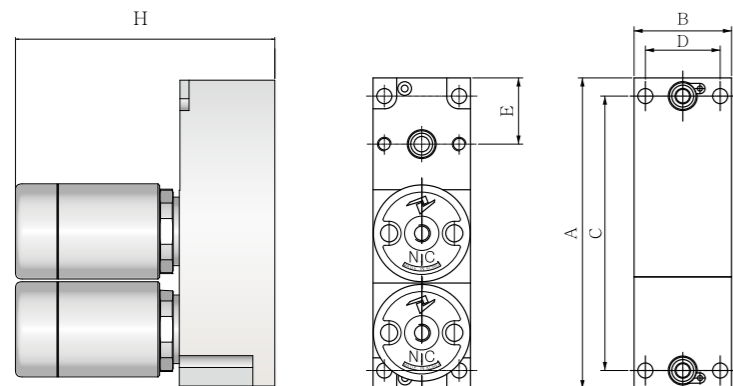
IGS Block Valve

Specifications

C Value	0.27
Max. Working Pressure	10 bar(145psig)
Max. Working Temperature	-10~80°C(14~176°F)
Internal Leakage Allowance -He	≤ 1 X 10 ⁻⁹ atm.cc/s
External Leakage Allowance -He	≤ 1 X 10 ⁻⁹ atm.cc/s
Materials	Body - 316L VAR SS
	Seat - PCTFE
	Diaphragm - ELGILOY



Dimensions



SIZE	Connection Type	A	B
1.125"	W-SEAL	90.6	28.6
1.5"		91.5	39

C	D	E	H
80	21.8	19.3	76.1
78.5	30	22.5	76.1

How To Order



PRODUCT TYPE		CONNECTION SIZE		VALVE OPTION 2		BODY MATERIAL	
VCIGS	IGS VALVE	11*	1.125"	None	NONE	None	316L VAR SS
OPERATION TYPE		15*	1.5"	RS1	PORXIMITY SENSOR (APPLY VALVE 1 ONLY)	INTERNAL SURFACE FINISH	
BL	BLOCK VALVE	CONNECTION TYPE		RS2	PORXIMITY SENSOR (APPLY VALVE 2 ONLY)	None	ELECTRO POLISHING
VALVE 1/2 OPERATION TYPE		**W	W-SEAL	RS3	PORXIMITY SENSOR (APPLY BOTH)		
None	PNEUMATIC N.C	**C	C-SEAL				
PO	PNEUMATIC N.O	VALVE OPTION 1					
MI	MANUAL(SPRING)	None	NONE				
MS	MANUAL(SCREW)	RV	REVERSE TYPE				

Dimensions are for reference only and are subject to change without prior notice.

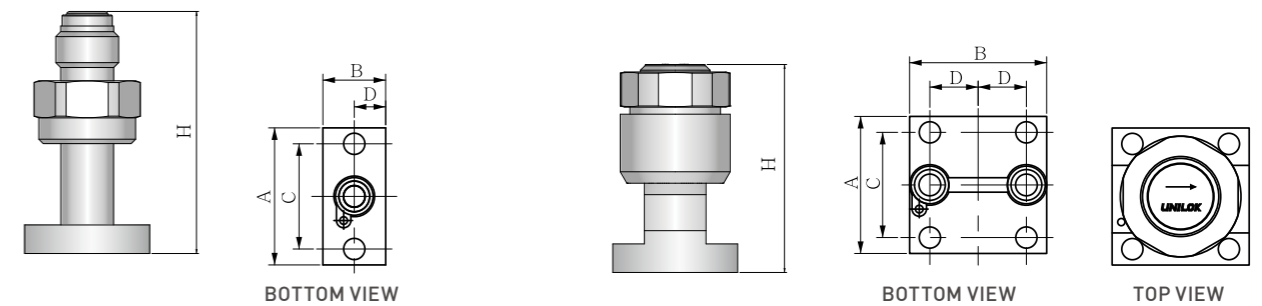
IGS Check Valve

Specifications

C Value	0.27
Max. Working Pressure	3000 psig(206 bar)
Max. Working Temperature	-10~80°C(14~176°F)
Norminal Cracking Pressure	< 2psig(0.14 bar)
Reseal Pressure	Up to 5~10 psig(0.34~0.69 bar)
External Leakage Allowance -He	≤ 1 X 10 ⁻⁹ atm.cc/s
Materials	Body - 316L VAR SS
	Seat - FKM(VITON)
	Plate Spring - ELGILOY



Dimensions



IN LINE CHECK VALVE

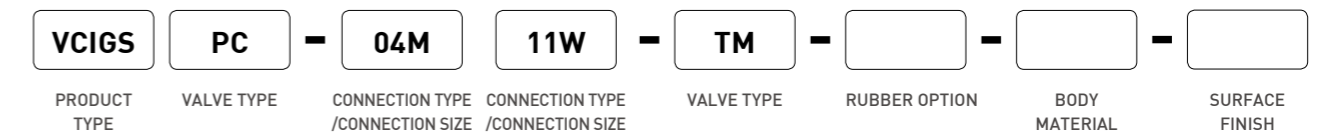
SIZE	CONNECTION TYPE	A	B	C	D	H
1.125"	W-SEAL	28.6	28.6	21.8	10	47.3
	C-SEAL	28.6	28.6	21.8	10.9	47.3
1.5"	W-SEAL	39	39	30	13	47.3
	C-SEAL	39	39	30	15.5	47.3

PURGE CHECK VALVE

INLET		OUTLET	
CONNECTION SIZE	CONNECTION TYPE	CONNECTION SIZE	CONNECTION TYPE
1.4"	VCR MALE	1.125"	W-SEAL
		1.5"	

A	B	C	D	H
28.6	13	21.8	6.5	50.05
39	39	30	9	50.05

How To Order



PRODUCT TYPE		CONNECTION SIZE		RUBBER OPTION		CONNECTION OPTION	
VCIGS	IGS VALVE	11*	1.125"	None	NONE	None	2 PORT
VALVE TYPE		15*	1.5"	RS	PORXIMITY SENSOR	3P	3 PORT
CHV-***-TM	IN LINE CHECK VALVE	CONNECTION TYPE		P	NEOPRENE	BODY MATERIAL	
CHV-04M***	CHECK VALVE (PURGE TYPE)	**W	W-SEAL	E	ETHYLENE PROPYLENE	None	316L VAR SS
		**C	C-SEAL	INTERNAL SURFACE FINISH			
		None ELECTRO POLISHING					

Dimensions are for reference only and are subject to change without prior notice.

IGS Regulator

Specification

Max. Inlet Pressure	150 psig
Outlet Pressure	30, 60, 100 psig
Design Proof Pressure	150% of maximum rated
Max. Working Temperature	-10~80°C(14~176°F)
Cv	0.04, 0.08
Inboard Leakage Allowance -He	≤ 1 X 10 ⁻⁹ atm.cc/s
Materials	Body - 316L VAR SS
	Seat - PCTFE
	Diaphragm - Hastelloy®
	Poppet - Hastelloy®

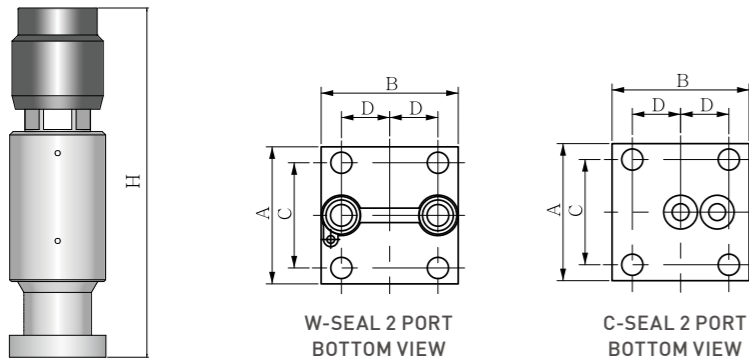


How To Order

RCI
C
-
11W
-
11
-
2
-

Regulator Type	Connection Type	Connection Size	Inlet / Outlet Pressure	Body Material	Surface Finish	Seat Material	
Regulator Type	Maximum Inlet Pressure		Body Material				
RCI	UHP Regulator		1	150 psig (0.04 Cv)	2	316L VAR Stainless Steel	
Connection Type		3	150 psig (0.08 Cv)	Internal Surface Finish			
C-*W	W-Seal		Outlet Pressure Range				
C-*C	C-Seal		0	1~30 psig / 1~2.1 bar	None	EP - Electro Polished	
Connection Size		1	1~60 psig / 1~4.1 bar	BA	BA		
11	1.125"		2	1~100 psig / 1~6.9 bar	Seat Material		
15	1.5"		None				PCTFE
		V				Vespel®	
		T				PTFE	

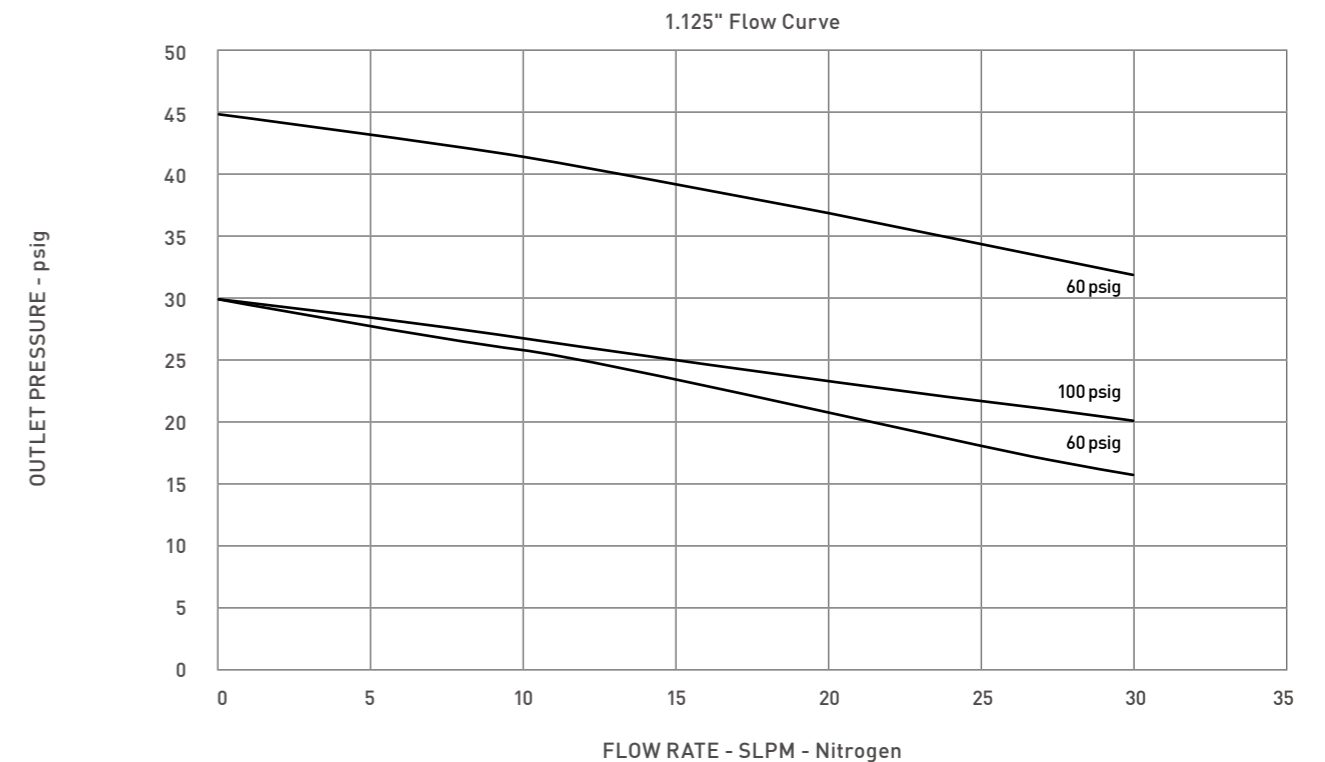
Ordering Information & Dimensions



Part Number	End Connection		A	B	C	D	H
	Inlet	Outlet					
RCI	C-11W-	1.125" W-Seal	28.6	28.6	21.8	10.0	117.5
	C-11C-	1.125" C-Seal	28.6	28.6	21.8	10.9	117.5
	C-15W-	1.5" W-Seal	39.0	39.0	30.0	13.0	119.0
	C-15C-	1.5" C-Seal	39.0	39.0	30.2	15.5	119.0

Dimensions are for reference only and are subject to change without prior notice.

Flow Chart



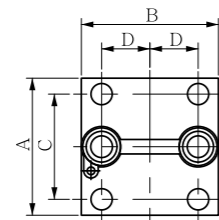
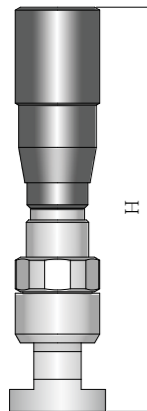
IGS Metering Valve

Specifications

C Value	0.065~
Max. Working Pressure	10 bar(145psig)
Max. Working Temperature	-10~80℃(14~176°F)
External Leakage Allowance -He	≤ 1 X 10 ⁻⁹ atm.cc/s
Materials	Body - 316L VAR SS
	Diaphragm - ELGILOY



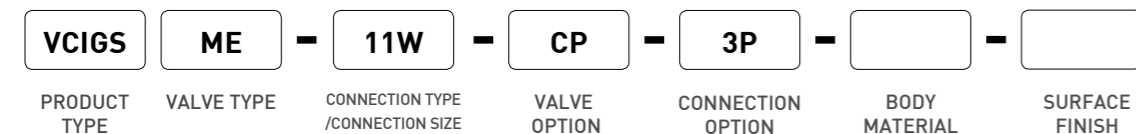
Dimensions



W-SEAL 2 PORT
BOTTOM VIEW

SIZE	CONNECTION TYPE	A	B	C	D	H(CAP)
1.125"	W-SEAL	28.6	28.6	21.8	10	120(135.9)
	C-SEAL	28.6	28.6	21.8	10.9	120(135.9)
1.5"	W-SEAL	39	39	30	13	120(135.9)
	C-SEAL	39	39	30	15.5	120(135.9)

How To Order



PRODUCT TYPE		CONNECTION SIZE		VALVE OPTION		BODY MATERIAL	
VCIGS	IGS VALVE	11*	1.125"	None	NONE	None	316L VAR SS
VALVE TYPE		15*	1.5"	CP	PROTECTION CAP	INTERNAL SURFACE FINISH	
ME	METERING	CONNECTION TYPE		CONNECTION OPTION		None	ELECTRO POLISHING
		**W	W-SEAL	None	2 PORT		
		**C	C-SEAL	3P	3 PORT		

Dimensions are for reference only and are subject to change without prior notice.

GASKET & GASKET RETAINER

How To Order

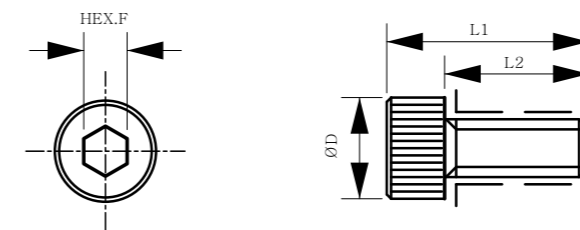
W-Seal

IMAGE	10.00		28.30		28.30	
	28.30		28.30		28.30	
PORT	1 PORT		2 PORT		3 PORT	
SIZE / PART NUMBER	1.125"	CGTR-IGS11W-01P	CGTR-IGS11W-02P	CGTR-IGS11W-03P	CGTR-IGS11W-03P	CGTR-IGS11W-03P
	1.5"	CGTR-IGS15W-01P	CGTR-IGS15W-02P	CGTR-IGS15W-03P	CGTR-IGS15W-03P	CGTR-IGS15W-03P

Material - 316L VAR SS

IGS HEX. Socket Cap Screw

Material	SUS XM7
Plate	Ag
Min. Tensile Strength	490 Mpa
Dimension Spec.	DIN 912 / ISO 4762



Part Name	M4X0.7			
	F	D	L1	L2
M4-10L	3	7	10	14
M4-15L			15	19
M4-30L			30	34

Dimensions are for reference only and are subject to change without prior notice.